



Performance Improvement Project

July – Sept 2006

Calls by Time

Agency Sampling



Reasoning

- As many agencies struggle to address the issue of recruitment and retention one of the topics often addressed is “When is greatest need”.
- Agencies may be able to use this data to look at local impact patterns or strategic staffing models.



Mode

- Selection of agencies from each planning district (4, 5, 12).
- Broken down into size (Small, Medium, Large)
- Selections done by district education coordinators based on call volume
- Two agencies per district per size
- Utilized OEMS PPCR data for July-Sept 2006 as reported on January 20, 2007



Agencies Utilized

	PD4	PD5	PD12
Small	Longshop-McCoy Volunteer Fire & Rescue	Callaway Volunteer Rescue Squad	Blue Ridge Volunteer Rescue Squad
	Newport R/S	Craig County Rescue Squad	Vesta Rescue Squad

Medium	Giles County Lifesaving Crew	Clifton Forge Rescue Squad	Bassett Rescue Squad
	Carilion Patient Transport Services/Radford EMS Division	Franklin County Department of Public Safety	Ridgeway District Rescue Squad Inc.

Large	Christiansburg Rescue Squad	Cave Spring Rescue Squad	Henry County Department of Public Safety
	Regional EMS Inc.-Pulaski Co.	Roanoke Fire and EMS	Danville Life Saving & First Aid Crew, Inc.

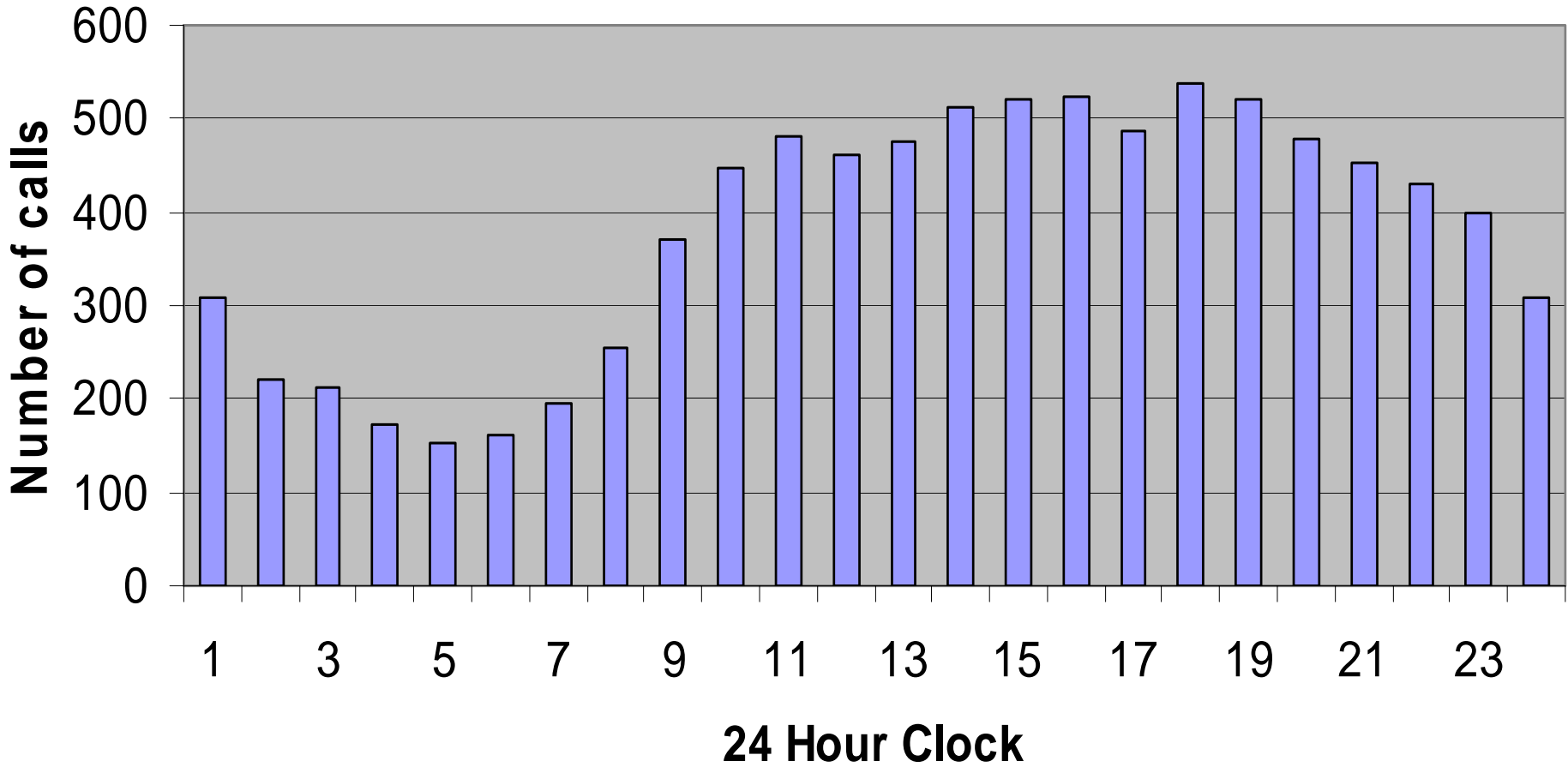


Data

- Total Calls – 9468
- Calls with Data – 9081
- Calls with Null Data – 387
- Percentage of calls with data – 95.91%

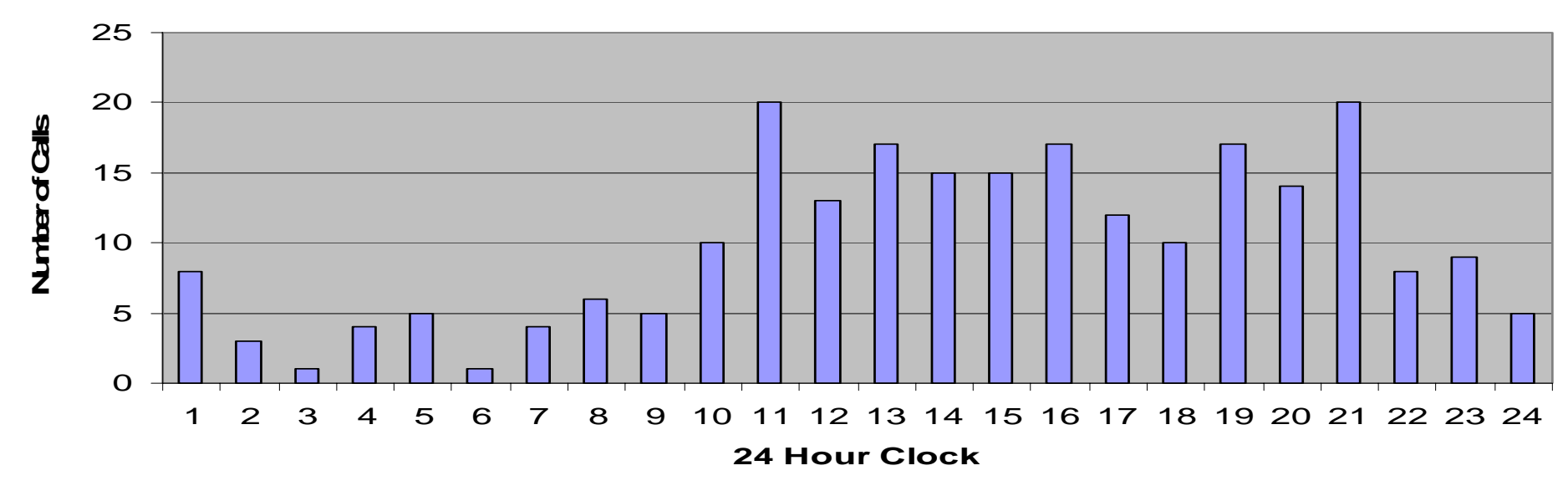
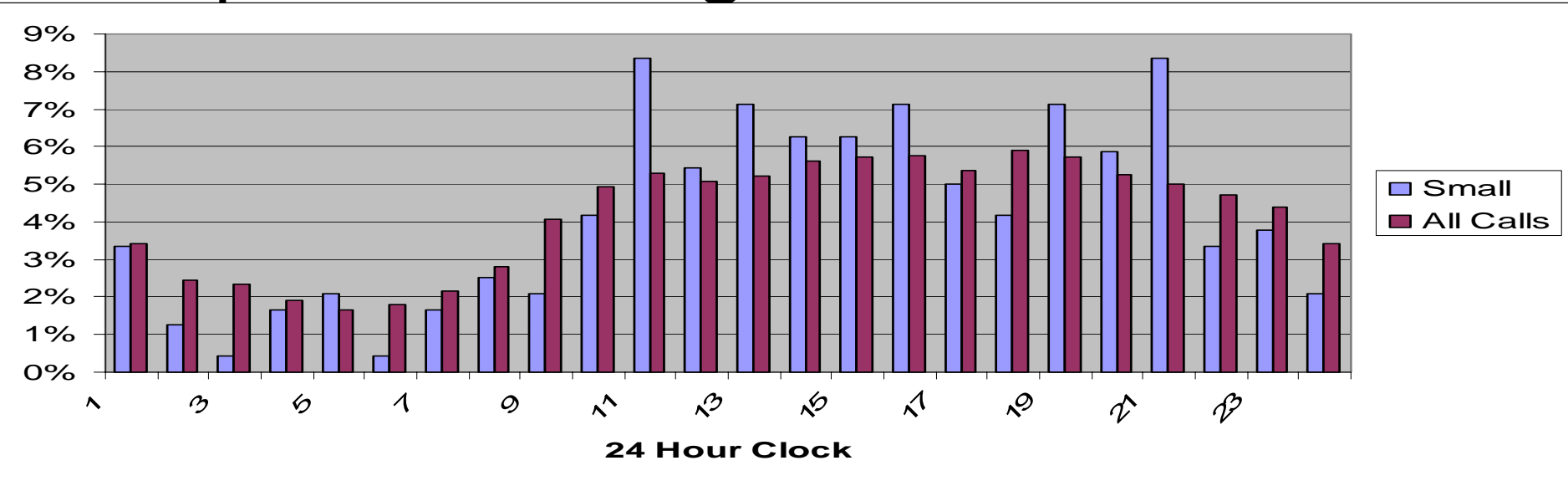
Overall

All calls with Data



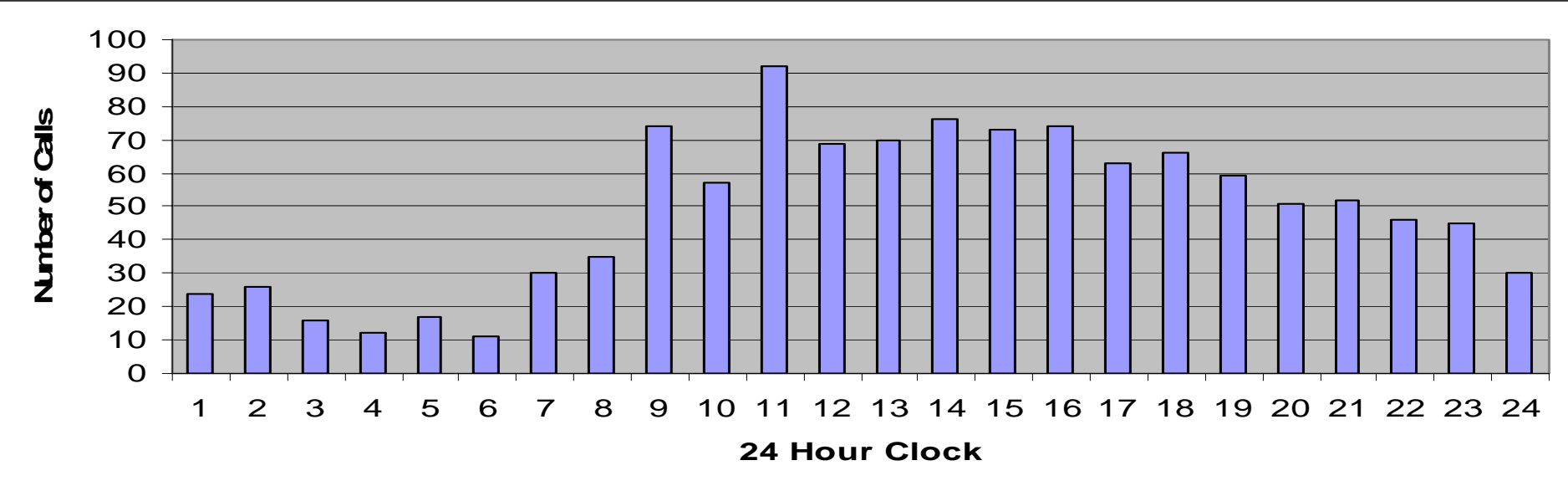
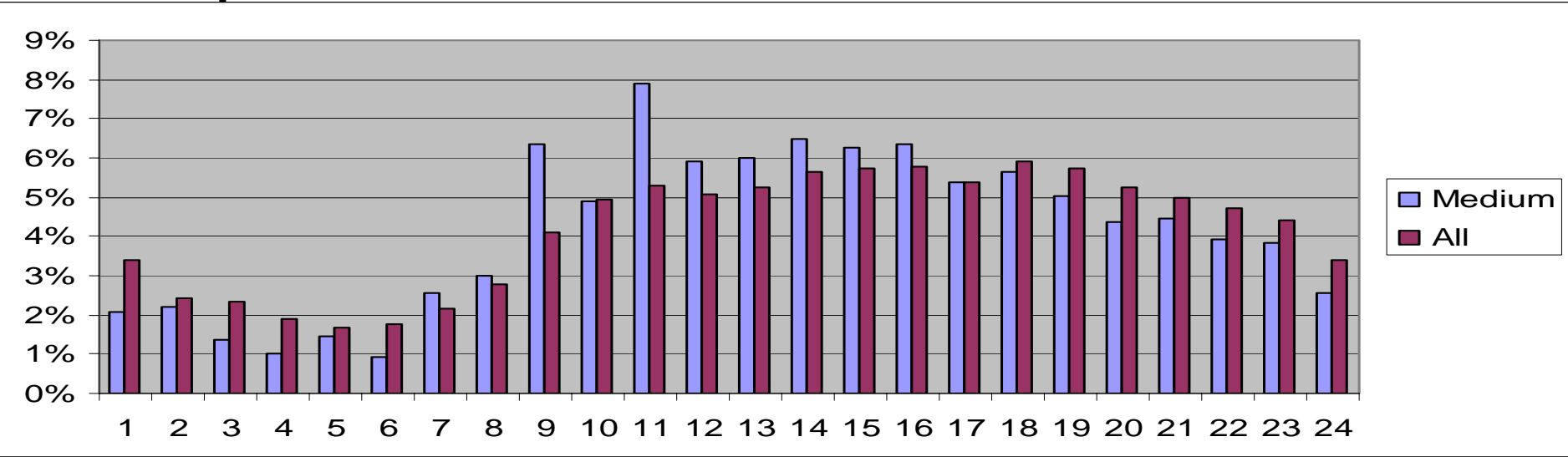


Small Agencies



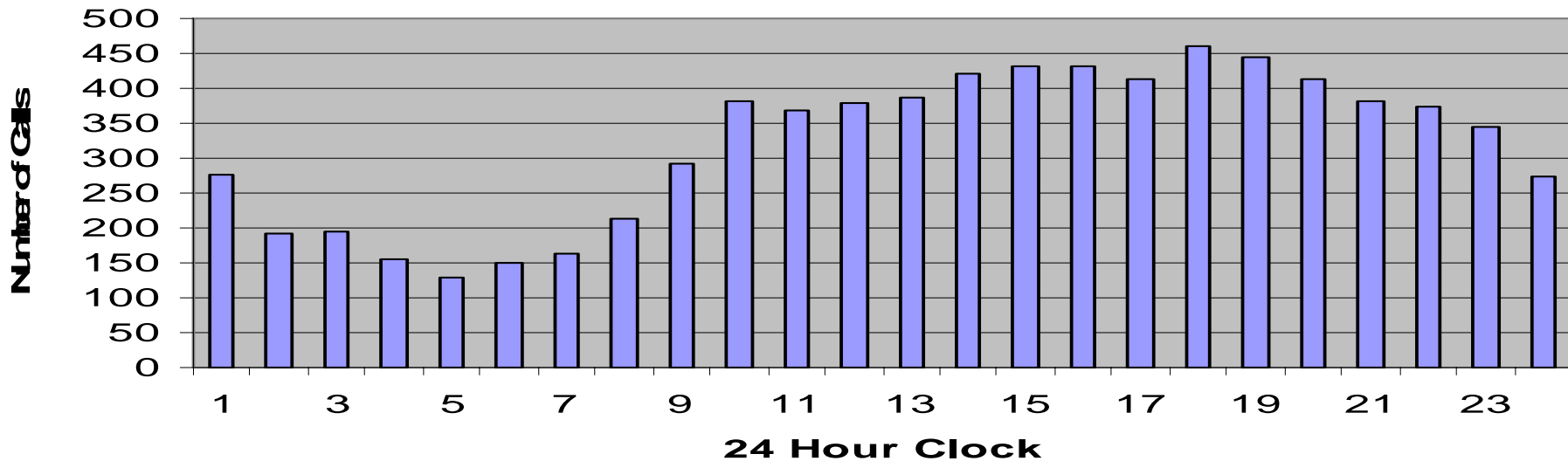
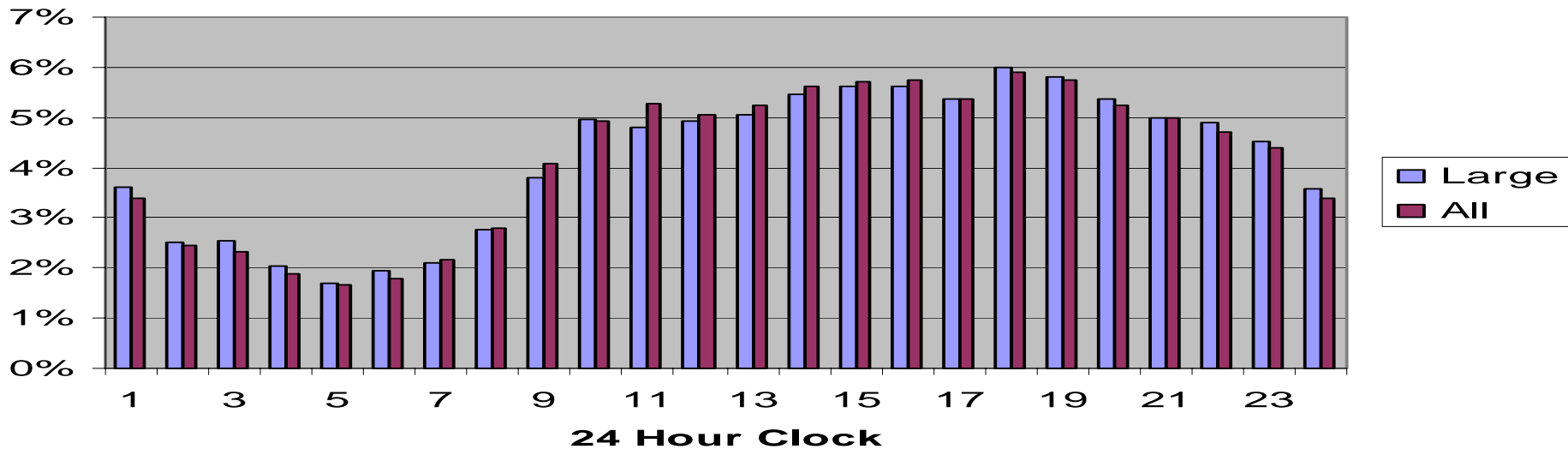


Medium Agencies





Large Agencies





Issues

- As of the report date, 5 agencies had not submitted data to the PPCR database for the selected time period
 - 2- Small
 - 2- Medium
 - 1- Large