
Performance Improvement Project

July - September 2006
Time of Call vs. Disposition

Objectives

- To allow for the comparison of time of day to disposition.
- Reflect any global trends that may be present concerning the disposition of patients.

Mode

- Selection of agencies from each planning district (4, 5, 12).
- Broken down into size (Small, Medium, Large)
- Selections done by district education coordinators based on call volume
- Two agencies per district per size
- Utilized OEMS PPCR data for July-Sept 2006 as reported on January 20, 2007

Agencies Utilized

	PD4	PD5	PD12
Small	Longshop-McCoy Volunteer Fire & Rescue	Callaway Volunteer Rescue Squad	Blue Ridge Volunteer Rescue Squad
	Newport R/S	Craig County Rescue Squad	Vesta Rescue Squad

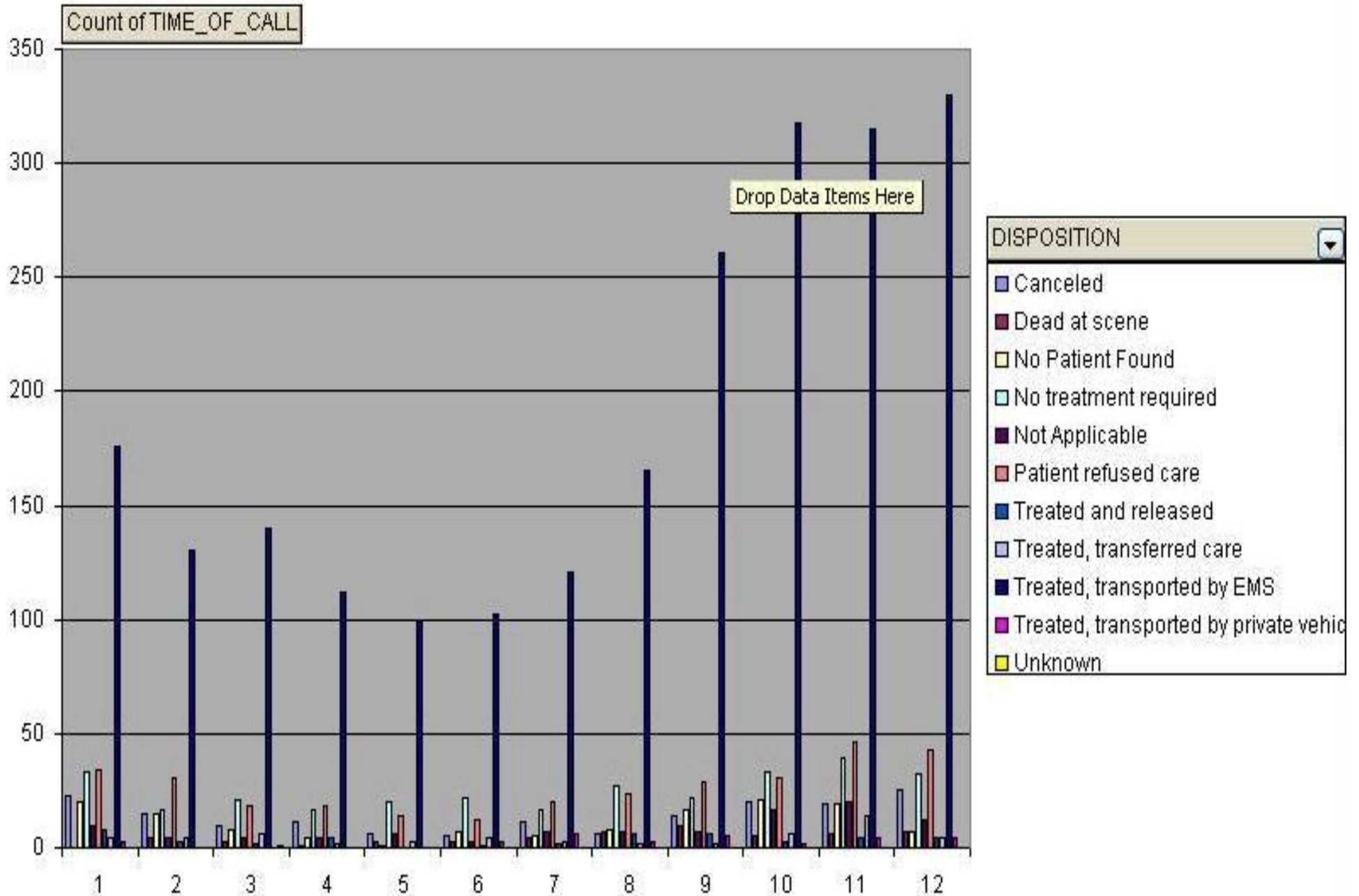
Medium	Giles County Lifesaving Crew	Clifton Forge Rescue Squad	Bassett Rescue Squad
	Carilion Patient Transport Services/Radford EMS Division	Franklin County Department of Public Safety	Ridgeway District Rescue Squad Inc.

Large	Christiansburg Rescue Squad	Cave Spring Rescue Squad	Henry County Department of Public Safety
	Regional EMS Inc.-Pulaski Co.	Roanoke Fire and EMS	Danville Life Saving & First Aid Crew, Inc.

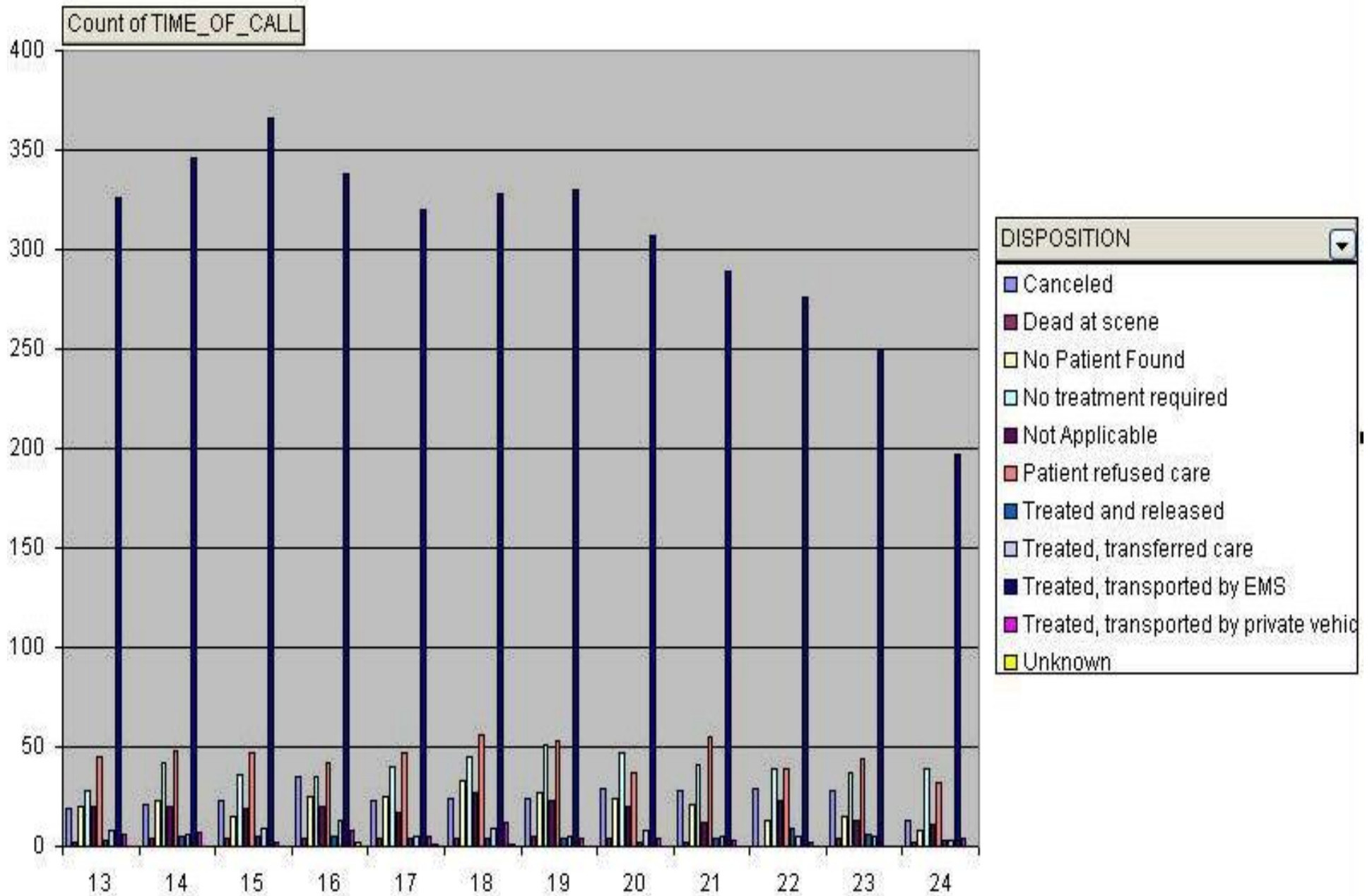
Data

- Total Calls – 9468
- Calls with Data – 9081
- Calls with Null Data – 387
- Percentage of calls with data – 95.91%

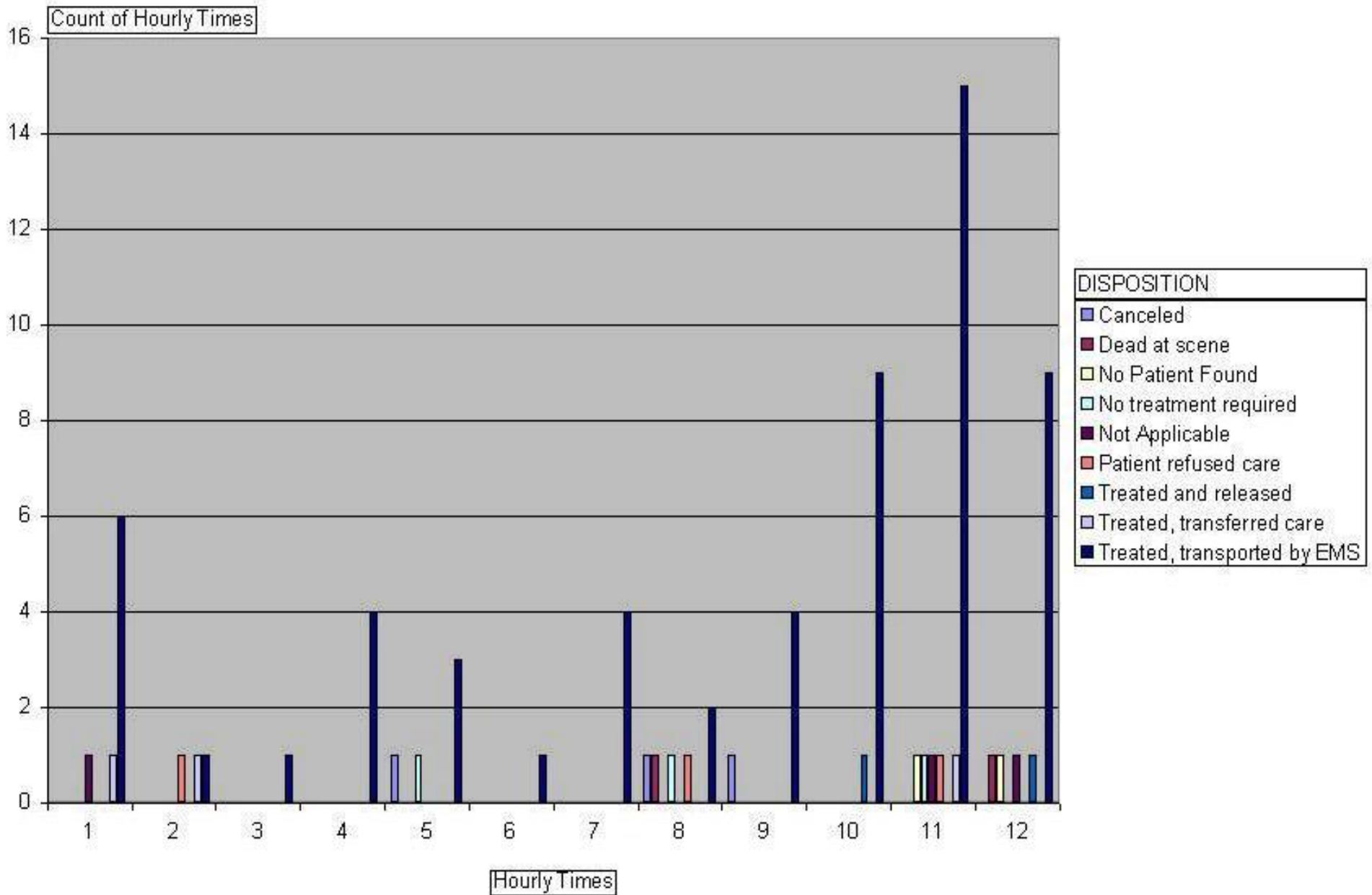
All Agencies



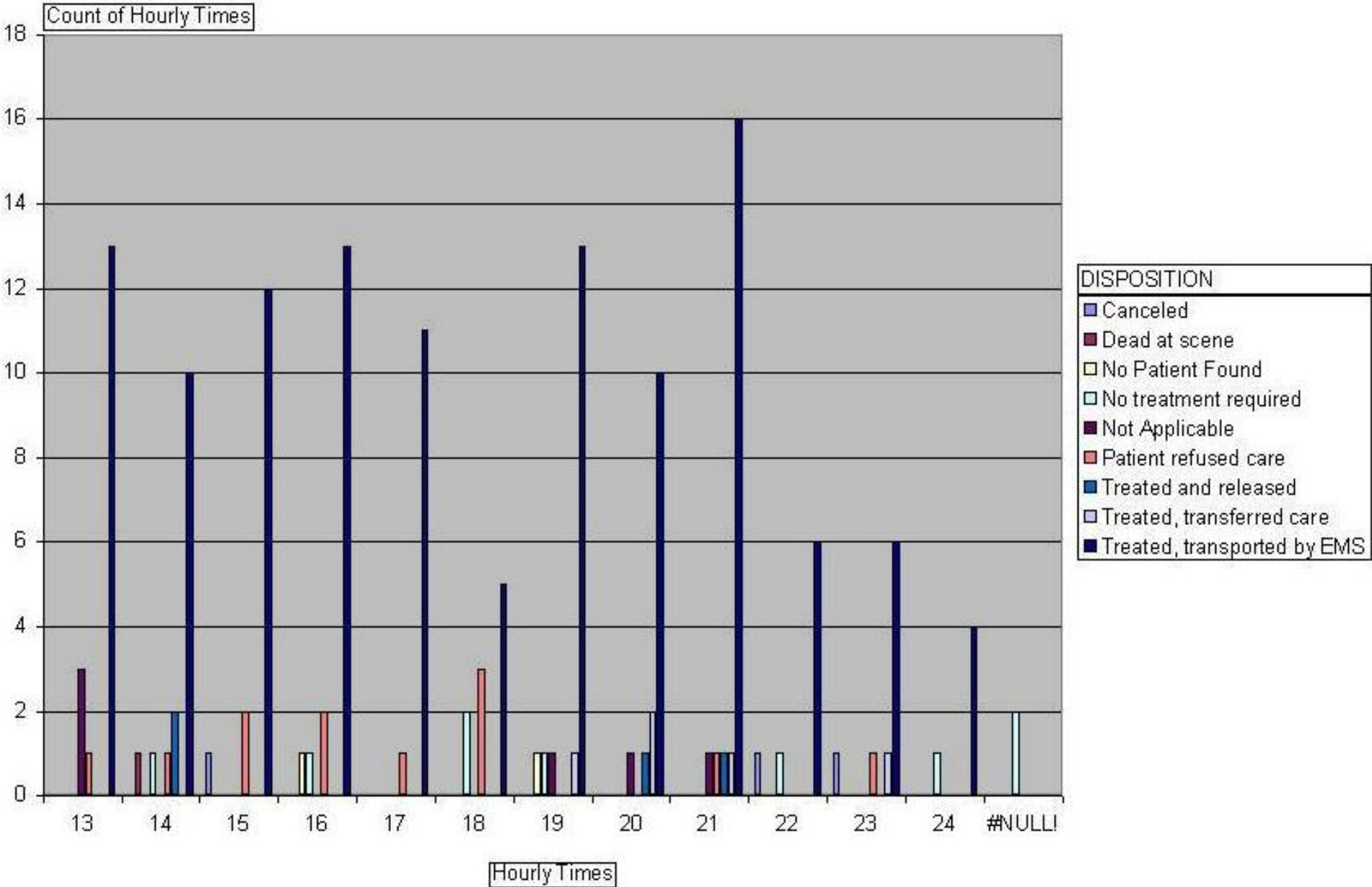
All Agencies



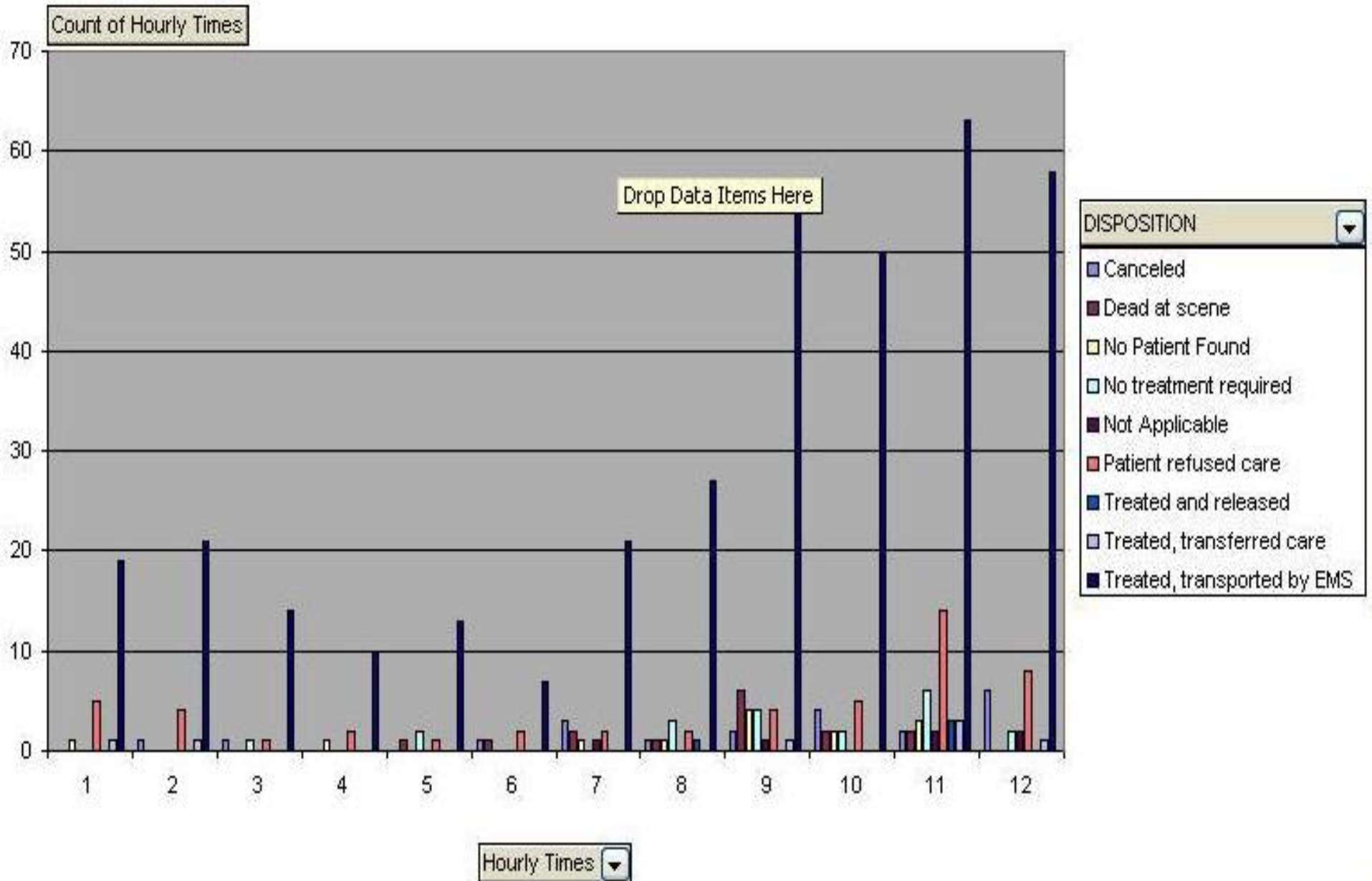
Small Agencies



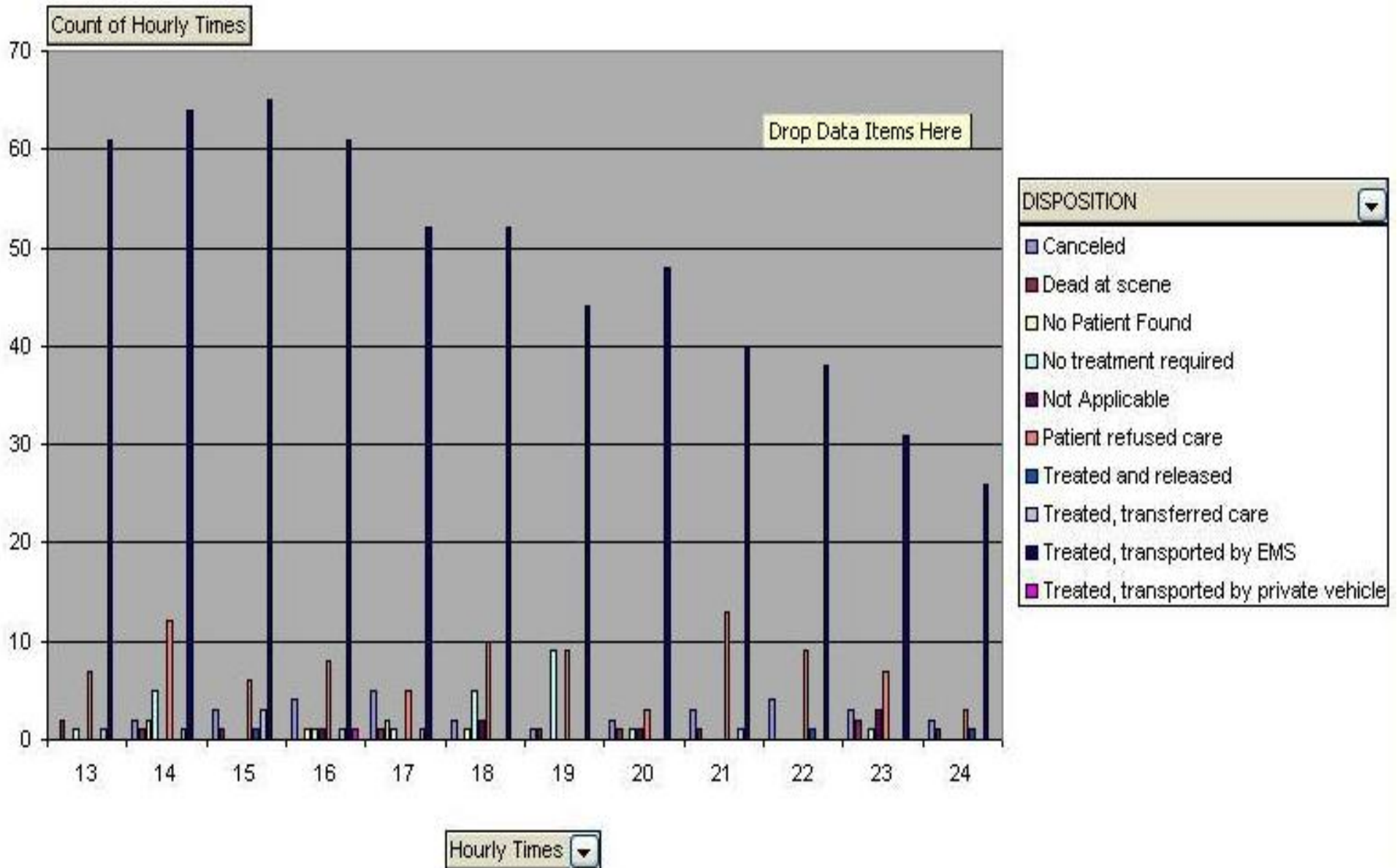
Small Agencies



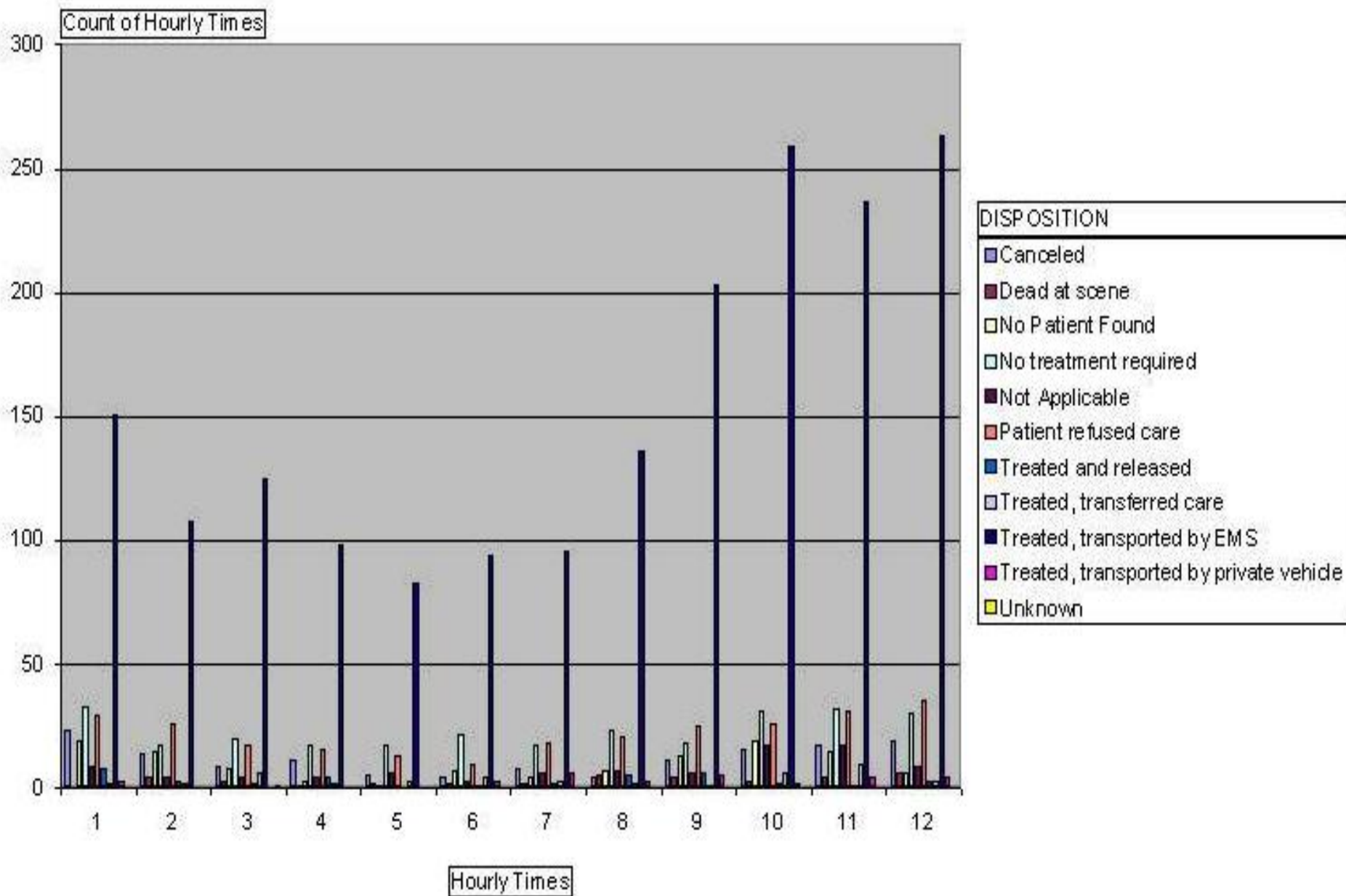
Medium Agencies



Medium Agencies



Large Agencies



Large Agencies

